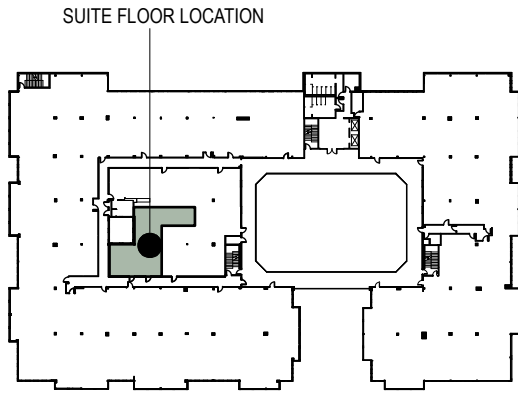
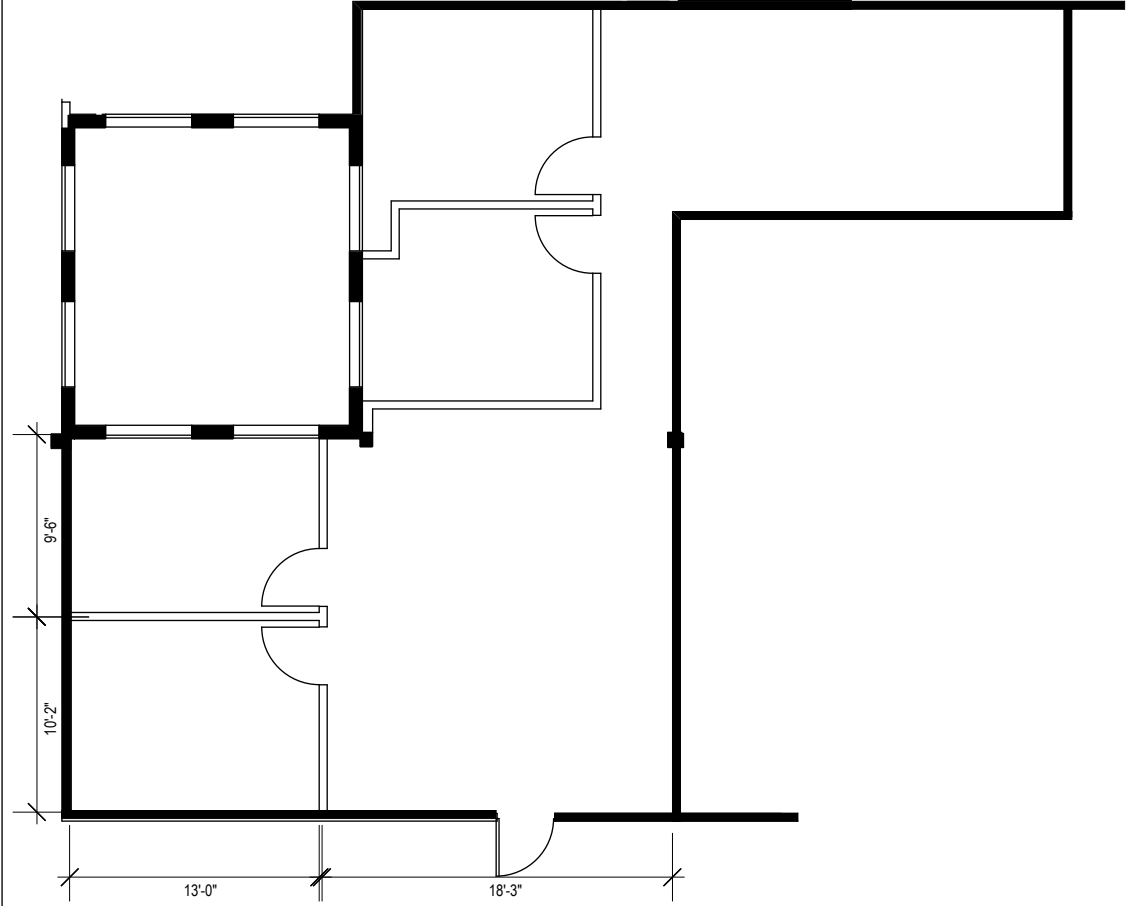


**BUILDING SITE LOCATION MAP**



**SECOND FLOOR KEY PLAN**



**SUITE 252**



Colliers International  
 1850 Mount Diablo Boulevard, Suite 200  
 Walnut Creek, CA 94596 | United States  
 www.colliers.com

LEASING AGENT

**Matt Hurd**  
 (925) 279-5567

[matt.hurd@colliers.com](mailto:matt.hurd@colliers.com)

**Scott Ellis**  
 (925) 279-5575

[scott.ellis@colliers.com](mailto:scott.ellis@colliers.com)

**Salvio Pacheco Square**

2151 Salvio Street  
 Concord, CA 94520

Second Floor

Owned & Managed by:

**LeFever Mattson**

Approximate Area Calculations  
 Subject To Verification:

1,388 rsf

As-built Plan To Be Verified

This information displayed while not guaranteed has been secured by sources we believe to be reliable. This information is subject to errors & omissions. Any tenant should conduct their own investigation.

Plan Revision - 1-7-19